

RAISING THE STANDARD.



Blooming rows of garden phlox and salvia, fragrant lavender, or organically grown farm to table produce. Who doesn't love a beautiful, colorful entry to your place of business, or a space overflowing with fragrant blossoms? Planx planters provide an heirloom quality space for heirloom plants in a community garden, or provide a long-lasting, maintenance-free planter suitable for any commercial application.



Planx[®]
PLANTERS

Planx[®] PLANTERS

Designed with style, versatility and zero maintenance in mind. All of our Planx Planters include an industry leading, 20 year warranty. With countless color and size configurations, design a garden or green space that works perfectly with your environment. Choose from our extensive standard offerings or we'll create a custom planter to your specifications.

RAISED BEDS

50 STANDARD OPTIONS



Raised bed gardens are perfect for growing farm to table produce. When space is limited, raised beds are great for square foot gardening.

ELEVATED GARDENS

30 STANDARD OPTIONS



Elevated gardens include a custom molded soil tray with drain holes. The tray can be placed at various heights (in 6" increments) for adjustable soil depth.

ADA ELEVATED GARDENS

16 STANDARD OPTIONS



ADA elevated gardens are 34" high and contain a custom molded soil tray with drain holes that can be placed at 6", 12", or 18".

PLANTERS

9 STANDARD OPTIONS



Square-shaped planters are typically used for trees or shrubbery. Trays with drainage holes allow for soil depth every 6" or choose an open bottom for in-ground planters.

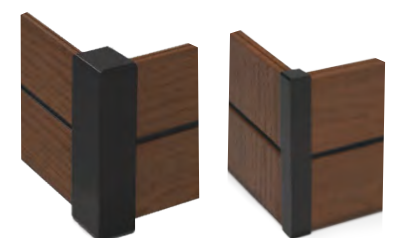
POTTING BENCHES

4 STANDARD OPTIONS



Create a functional workstation for potting, washing, arranging and storage.

CONTEMPORARY OR TRADITIONAL POSTS



Traditional
4" Corner Post

Contemporary
1.5" Corner Post

Most Planx planters are available with either traditional or contemporary corner posts.

CUSTOMIZATION

Planx planters have a modular design allowing you to create a size, shape, and depth that is perfect for your space. Choose from a variety of plank and post colors, add a trellis for vining plants or to have a place to hang your tools. The possibilities are endless. Have another idea? Let us know. We love a challenge.

