

envisor[®]

SCREENING SYSTEMS

cityScapes[®]
ARCHITECTURAL INNOVATIONS



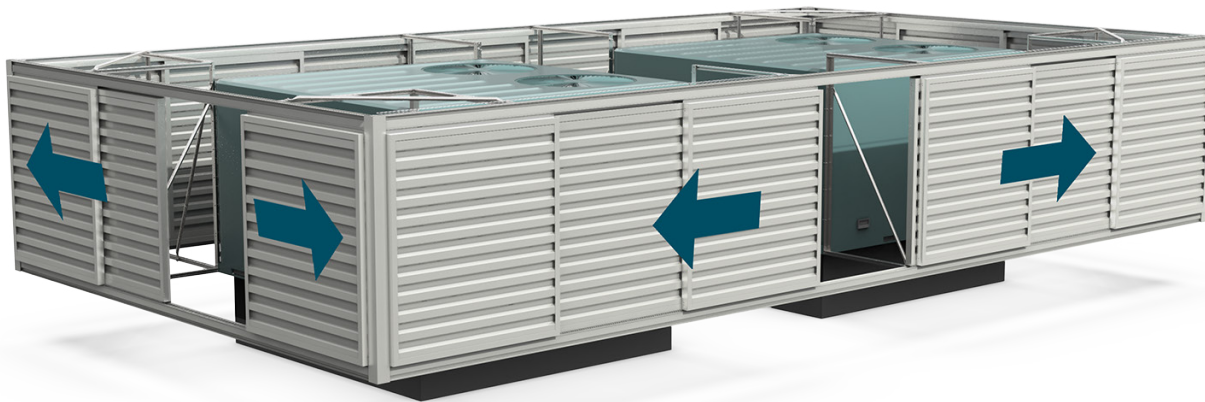
Office Building
Indianapolis, IN

ENVISOR[®]

ROOF SCREENS WITH SOARING GOOD LOOKS

Set the bar high with durable and attractive Envisor[®] roof screens. Affordable and elegant, Envisor makes meeting code simple and blends into any design. Better yet, no rooftop penetration is required for installation, which gives you a clean, modern look.

- Practical solution for municipal screening requirements of HVAC units, chillers, air handlers, and more.
- Create your own custom design for your specific application.
- Nationwide project management and installation available.
- Designed in-house and manufactured in a state-of-the-art facility.



ZERO ROOFTOP PENETRATION

UV and rust resistant finishes to protect from harsh environments

CODE COMPLIANT

Practical solution for municipal screening requirements of HVAC units, chillers, air handlers, and more

WIND LOAD AND RESISTANCE

Ultimate wind speed resistance

EASY MAINTENANCE

Panels slide for easy service access

PANEL STYLES BLEND BUILDING DESIGN & UTILITY

Envisor® offers over 15 panel designs and variety of colors to choose from, ensuring that your HVAC screening perfectly matches your building design.





MS Consultants
Columbus, OH

METAL INFILLS

- Frames are 6063 T6 extruded aluminum.
- Frame infill material thickness varies depending on infill choice.
- Panels can be stacked for additional coverage.
- Sherwin Williams 4000 Series Powder-Coated Components.
- PE Stamped drawings are available on all North America projects.



**4.0 Corrugated
Horizontal**



**4.0 Corrugated
Vertical**



**7.2 Rib Solid
Horizontal**



**7.2 Rib Solid
Vertical**



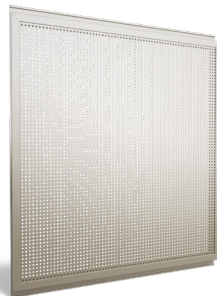
**7.2 Rib Perforated
Horizontal**



**7.2 Rib Perforated
Vertical**



Pan Solid



Pan Perforated



Vented Louver



Old Town Hot Springs
Steamboat Springs, CO



Hospital
Richmond, VA

ACRYLICAP[®] ABS INFILLS

- Acrylicap[®] uses .187 acrylic-capped ABS for UV protection.
- Standard panel heights are 35", 52", 70".
- Panels can be stacked for additional coverage.
- PE Stamped drawings are available on all North America projects.



Louver



Horizontal Rib



7.2 Rib



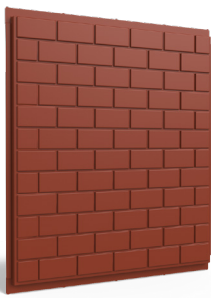
Flat Pan



Batten



Vertical Rib



Brick



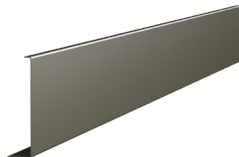
Custom

TRIM STYLE OPTIONS

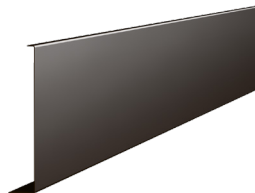
Enhance your Roof Screen with our durable trim options. Meticulously crafted from .063" wall – 6063 T5 extruded aluminum shapes, these trims feature a 4000 series powder coat finish for long-lasting rust resistance. Elevate your space with trim that combines both style and endurance.



3" Lineal Band



6" Lineal Band



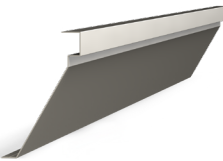
8" Lineal Band



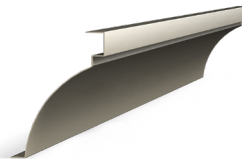
2-Step



3-Step



Alamo



Cove

COLOR OPTIONS

Select from a range of standard powder-coat or Acrylicap[®] ABS finishes that can withstand the elements of nature and endure the test of time.

Want something unique? Provide a sample, RAL or PMS number and we will color match to your specifications.





Willow Creek
Las Vegas, NV



Red Lobster
Thousand Oaks, CA



Amazon Fulfillment Center
Edison, NJ

envisor[®]
SCREENING SYSTEMS

covrit[®]
SCREENING SYSTEMS

ToughGate[™]
GATES & DOORS

Planx[®]
PLANTERS

nature
screen[®]

SANCTUM
cabanas

Marquee
CANOPIES

ARCHITECTURAL
signage

custom
SOLUTIONS

ECLIPSE[™]
PRIVACY SCREENS

CityScapes[®]

PROFESSIONAL-GRADE PRODUCTS
READY TO MAKE YOUR NEXT PROJECT PERFECT

FOLLOW US | [f](#) [@](#) [p](#) [in](#)

877.727.3367  **CITYSCAPESINC.COM**
