

**Planx**<sup>®</sup>

**PLANTERS**

**INSTALL**

**INSTRUCTIONS**

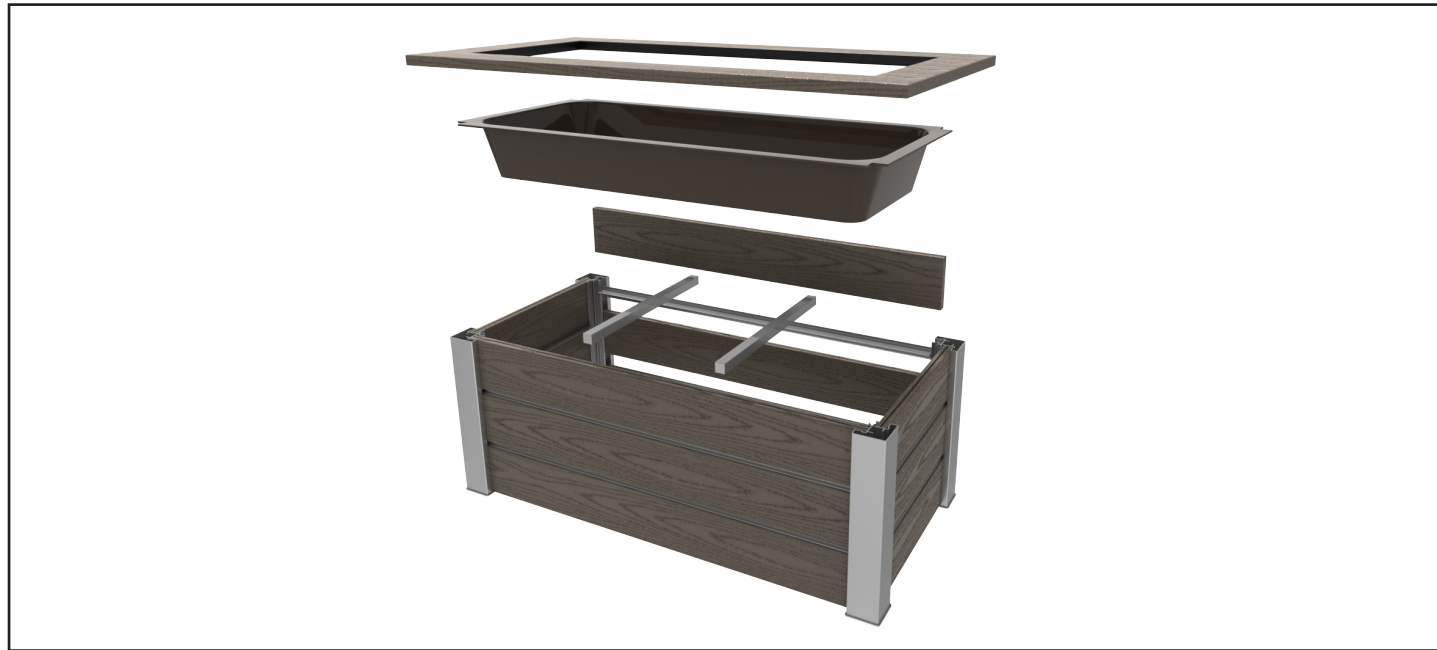
PLA-QS

# PLANX<sup>®</sup> PLANTERS SYSTEM INSTALLATION INSTRUCTIONS

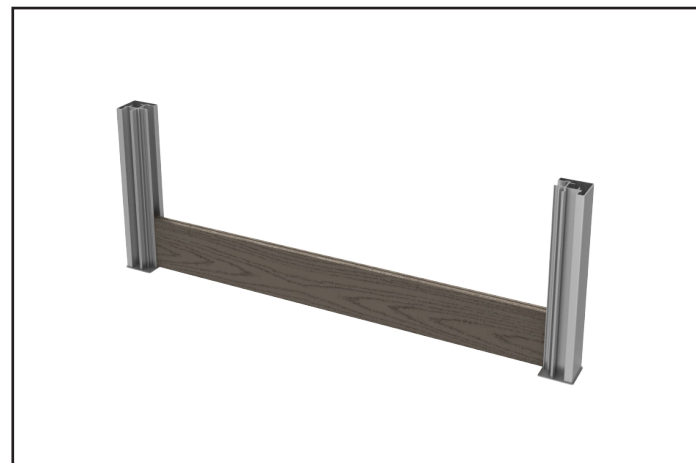
For detailed instructions please visit our website's resources section. To order a Planx<sup>®</sup> Planters System for your next project call 877.727.3367 or email [contact@cityscapesinc.com](mailto:contact@cityscapesinc.com).

## PLANX<sup>®</sup> PLANTERS EXPLODED VIEW:

"Modular by Design" allows for a more user-friendly installation. This instruction packet is intended to communicate the typical Planx<sup>®</sup> Planter installation. Each planter ships as a knockdown assembly, with project specific part lists and instruction supplements. Please review these pages carefully. We encourage you to call, fax or e-mail your questions and thank you for your interest in Planx<sup>®</sup> Planter Systems.

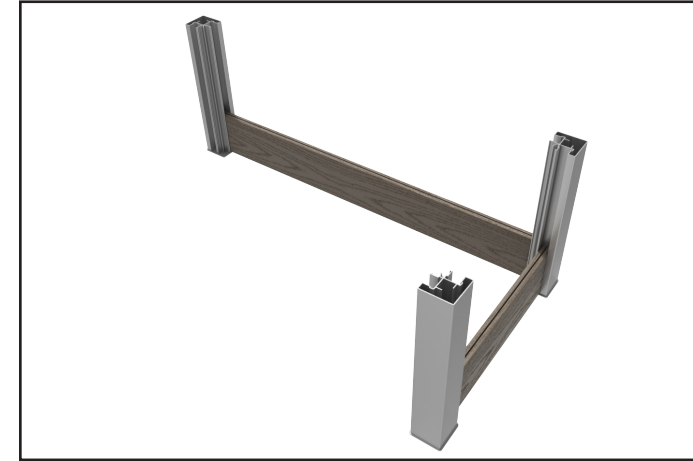


## INSTALLATION STEPS:



1. Starting with a corner, align one of the long bottom planks (1 groove on side) in the channel of the **POST** with the groove facing up. Make sure the open corner on the **POSTS** face the center of the planter during install.
2. Align the second **CORNER POST** or **MIDSPAN POSTS** (confirm with the submittal drawing) with the lower course and check for square between post and plank.  
  
**DO NOT ANCHOR.**

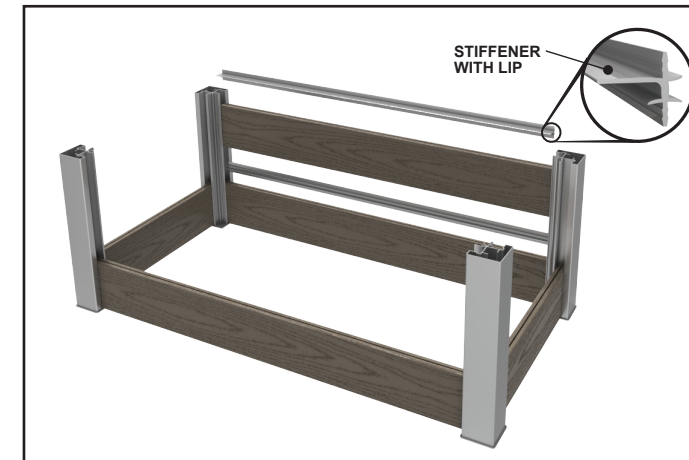
## INSTALLATION STEPS:



3. Align one of the short bottom planks (1 groove on side) in the channel of the post with the groove facing up.
4. Align the third corner post with the lower course and check for square between post and plank.  
**DO NOT ANCHOR.**
5. Check for square between the long & short planks.
6. Repeat steps 3-7 for the front and remaining side checking for square after each post is added.



7. Anchor each post in a clockwise manor, checking for square after each post is secured, adjusting as required.
8. If **MIDSPANS** are used, secure the **CROSS MEMBER SUPPORTS** between the **MIDSPAN POSTS** using the #10 x 3/4" screws.
9. Secure the planks to the posts using the #10 x 3/4" screws through the **PREDRILLED PILOT HOLES**.

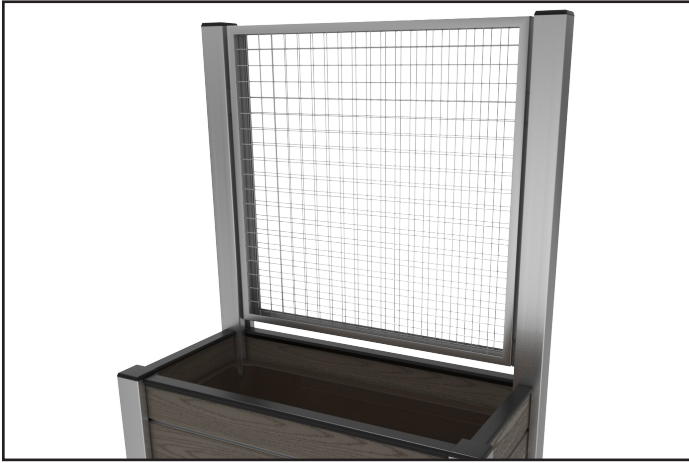


10. Press the standard **STIFFENER (NO LIP)** into the groove on top of the planks
11. Build up the second course of planks on the **STIFFENERS** and continue alternating **STIFFENERS** and plank courses
12. When you reach the **STIFFENER** level for the planter support, use the **LIP STIFFENER** and install with the **LIP** towards the center of the planter.
13. Add another course of planks and then install another layer of **LIPPED STIFFENERS** with the **LIPS** towards the center of the planter.
14. Continue building the planter with the remaining planks and **STIFFENERS**.



15. Once at the top **STIFFENER**, place the **1 X 1" TUBE SUPPORTS** on the **LOWER LIP LEVEL**. This will provide support for the dirt filled planter.
16. Add the planter **SPACER RING** to the top **LIP STIFFENER** level.

# INSTALLATION STEPS FOR NATURESCREEN® ENHANCEMENT:



17. If NatureScreen® is part of the assembly, follow instructions to build that section.
18. Screw the **NATURESCREEN®** into the **REAR POSTS** with **TEK SCREWS**. A centerline groove for the holes is provided in the extrusion on the open corner of the **POST**.
19. Add the **FILLER TUBE** to the open channels on the same posts of the NatureScreen®.



20. If a **TOP RING** is included, add the top **STIFFENER** to the planks with the **LIP** facing outward from the planter. Fit the prebuilt **TOP TRIM RING** and attach with screws from the underside.
21. If no **TOP RING**, add the **TOP EXTRUSION CAP** along the planks and then add the **POST TOP CAPS**.
22. For NatureScreen® planters, fit the **SNAP COVERS** on the inside corners to close off the post and hide the screw heads.
23. Finally, fill the planter **TRAY** with dirt and the planter is ready for growing!

To order a Planx® Planters System for your next project call 877.727.3367 or email [contact@cityscapesinc.com](mailto:contact@cityscapesinc.com)

# CityScapes®

PROFESSIONAL-GRADE PRODUCTS  
READY TO MAKE YOUR NEXT PROJECT PERFECT

FOLLOW US | [f](#) [@](#) [p](#) [in](#)

877.727.3367 [CITYSCAPESINC.COM](#)

**envisor®**  
SCREENING SYSTEMS

**covrit®**  
SCREENING SYSTEMS

**ToughGate™**  
GATES & DOORS

**nature  
screen®**

**Planx®**  
PLANTERS

**ECLIPSE™**  
PRIVACY SCREENS

**SANCTUM**  
cabanas

**Marquee**  
CANOPIES

ARCHITECTURAL  
**signage**

**custom**  
SOLUTIONS