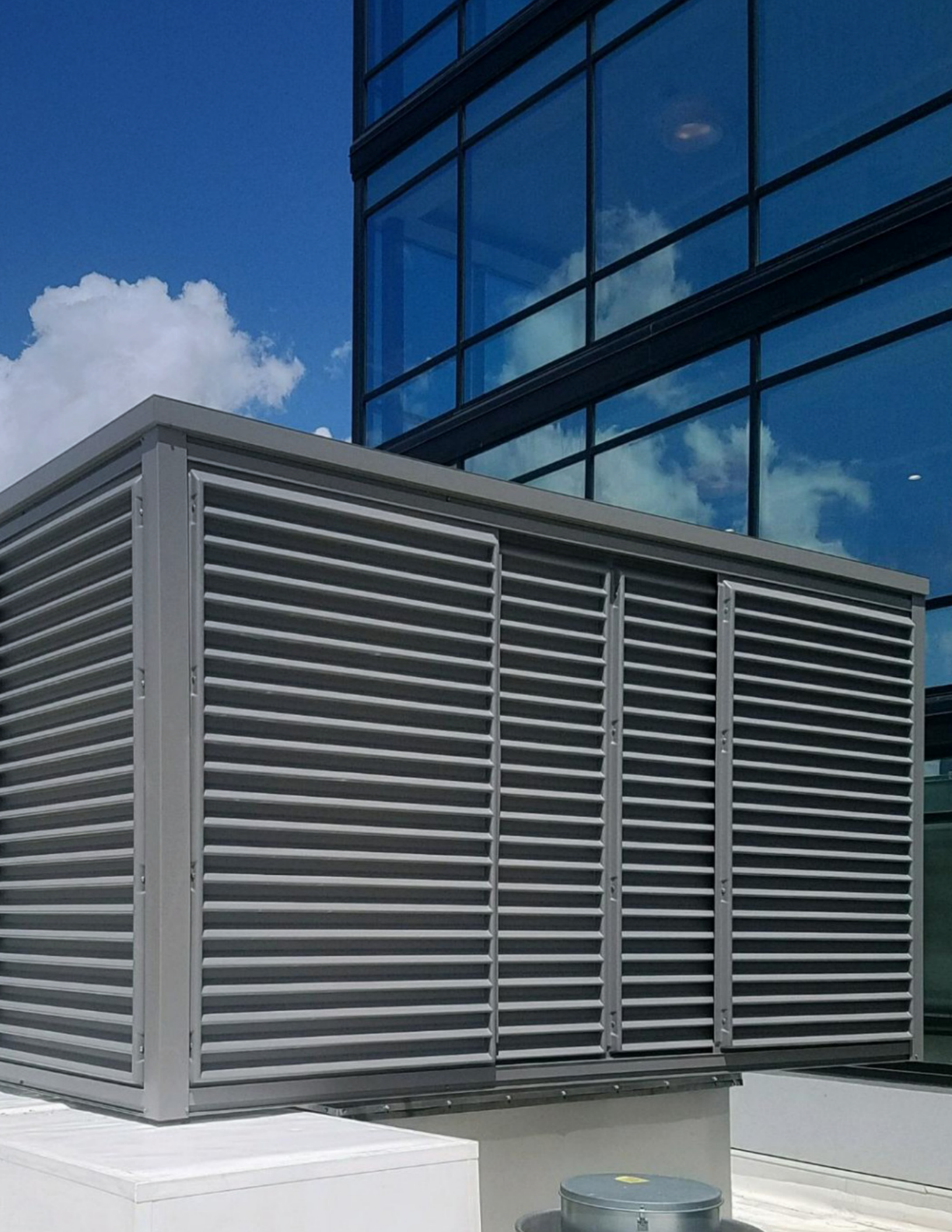


**CityScapes**<sup>®</sup>  
ARCHITECTURAL INNOVATIONS





# ENVISOR®

## ROOF SCREENS WITH SOARING GOOD LOOKS

Set the bar high with durable and attractive Envisor® roof screens. Affordable and elegant, Envisor makes meeting code simple and blends into any design. Better yet, no rooftop penetration is required for installation, which gives you a clean, modern look.

- ⦿ Practical solution for municipal screening requirements of HVAC units, chillers, air handlers, and more.
- ⦿ Create your own custom design for your specific application.
- ⦿ Nationwide project management and installation available.
- ⦿ Designed in-house and manufactured in a state-of-the-art facility.



### ZERO ROOFTOP PENETRATION

Screens secure directly to the equipment.



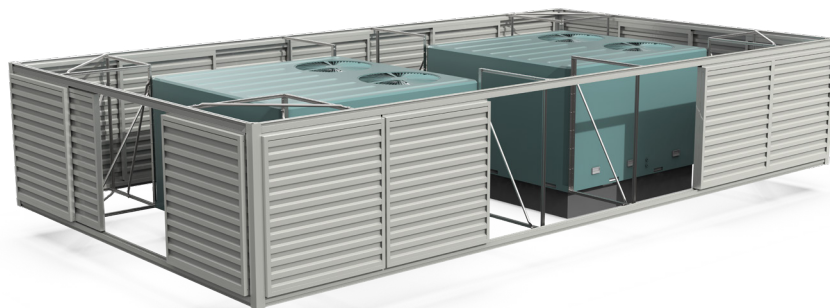
### CUSTOMIZABLE DESIGN

Countless color and size configurations.



### MADE IN USA

From design to manufacturing.



# ENVISOR®

## PANEL STYLES BLEND BUILDING DESIGN AND UTILITY

---

Envisor® offers over 15 panel designs and variety of colors to choose from, ensuring that your HVAC screening perfectly matches your building design. Whether you're looking for a modern or traditional aesthetic, our customizable options have you covered. Choose Envisor® for a product that not only functions effectively but also enhances the appearance of your building.

### METAL INFILLS

---

- ⦿ Frames are 6063 T6 extruded aluminum.
- ⦿ Frame infill material thickness varies depending on infill choice.
- ⦿ Panels can be stacked for additional coverage.
- ⦿ Sherwin Williams 4000 Series Powder-Coated Components.
- ⦿ PE Stamped drawings are available on all North America projects.

### ACRYLICAP® ABS INFILLS

---

- ⦿ Acrylicap® uses .187 acrylic-capped ABS for UV protection.
- ⦿ Standard panel heights are 35", 52", 70".
- ⦿ Panels can be stacked for additional coverage.
- ⦿ PE Stamped drawings are available on all North America projects.







# METAL INFILL OPTIONS

---



Solid Pan      4.0 Corrugated Horizontal      4.0 Corrugated Vertical      7.2 Rib Horizontal      7.2 Rib Vertical



Vented Louver      Perforated Pan      Perforated 7.2 Rib Horizontal      Perforated 7.2 Rib Vertical

## TOP TRIM OPTIONS

---



Lineal Band      2 Step      3 Step      Alamo      Cove

# METAL INFILL COLORS

---

Metal Panels are most often ordered in one of these colors. Want something unique? Provide a sample, RAL or PMS number and we will color match to your specifications.

*Swatches viewed on printed material are intended to be a guide to our product color choices. For best results, contact us to request material samples that will provide true color representation.*



Alabaster



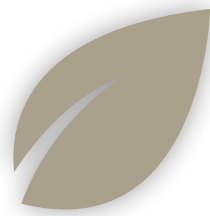
Satin White



Putty



Shadow Gray



Oyster



Slate Gray



Silver Satin



Electric Black



Mansard Brown



Dark Bronze



Forest Green



Slate Blue



Terracotta



Black Textured



City Brown Textured



City Green Textured



NightHawk Textured



# ACRYLICAP ABS INFILL OPTIONS

---



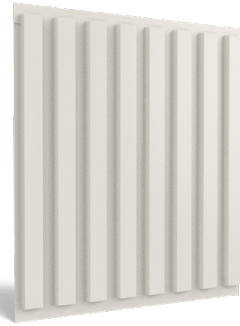
Louver



Rib Horizontal



7.2 Rib



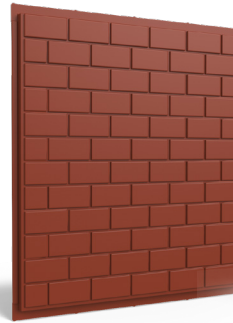
Rib Vertical



Batten



Flat Pan



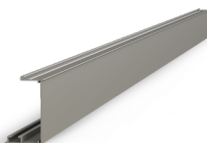
Brick



Custom

## TOP TRIM OPTIONS

---



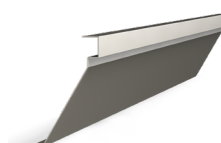
Lineal Band



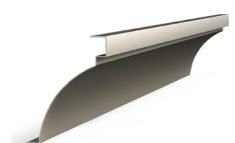
2 Step



3 Step



Alamo



Cove



# ACRYLICAP INFILL COLORS

---

Acrylicap ABS Panels are most often ordered in one of these colors. Want something unique? Provide a sample, RAL or PMS number and we will color match to your specifications.

*Swatches viewed on printed material are intended to be a guide to our product color choices. For best results, contact us to request material samples that will provide true color representation.*



**Alabaster**



**Forest Green**



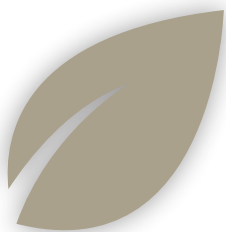
**Shadow Gray**



**Slate Gray**



**Dark Bronze**



**Oyster**



**Putty**



**Terracotta**



**Mansard Brown**



**Electric Black**



**Slate Blue**







**envisor**<sup>®</sup>  
SCREENING SYSTEMS

**covrit**<sup>®</sup>  
SCREENING SYSTEMS

**ToughGate**<sup>™</sup>  
GATES & DOORS

**Planx**<sup>®</sup>  
PLANTERS

**nature**  
**screen**<sup>®</sup>

**SANCTUM**  
cabanas

**Marquee**  
CANOPIES

ARCHITECTURAL  
**signage**

**custom**  
SOLUTIONS

**ECLIPSE**<sup>™</sup>  
PRIVACY SCREENS

**CityScapes**<sup>®</sup>

PROFESSIONAL-GRADE PRODUCTS  
READY TO MAKE YOUR NEXT PROJECT PERFECT

FOLLOW US | [f](#) [@](#) [p](#) [in](#)

---

**877.727.3367**  **CITYCAPESINC.COM**

---